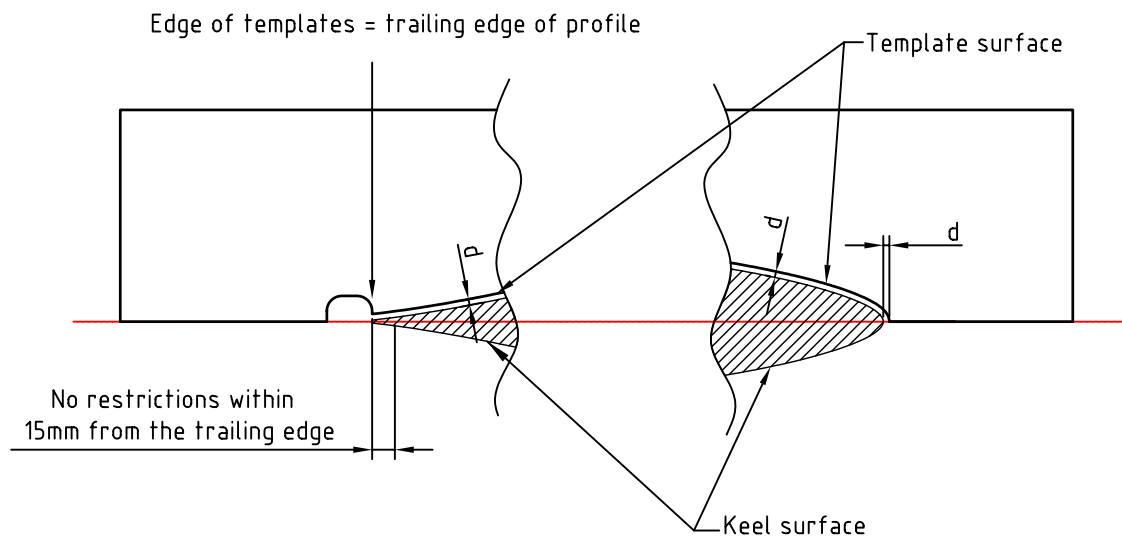


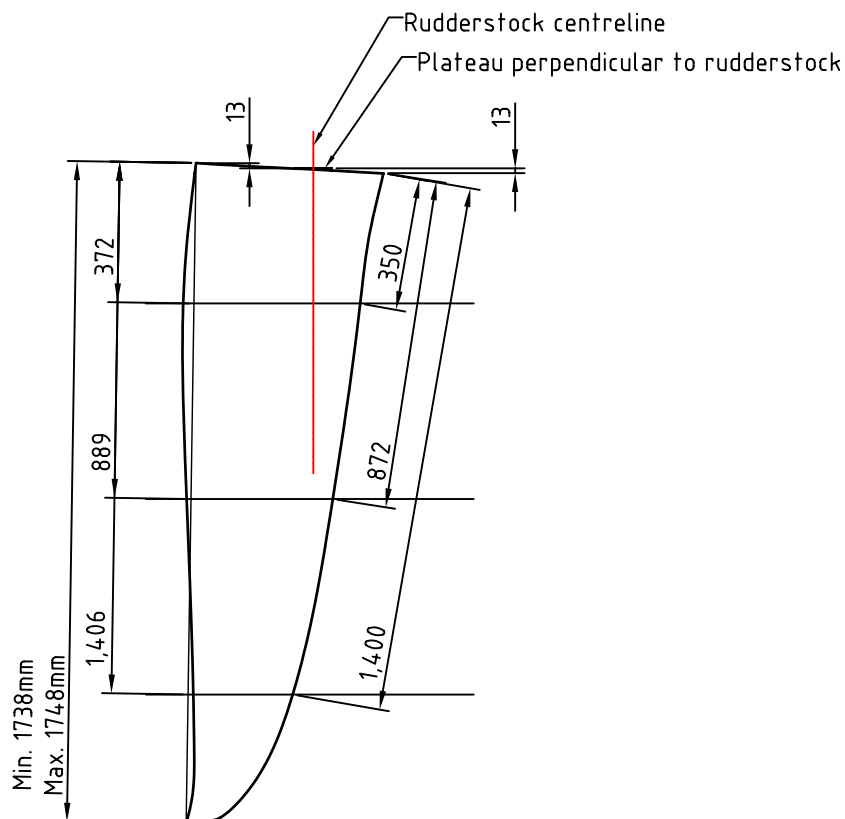


Principle of maximum templates for the X-35
Scale 1:5

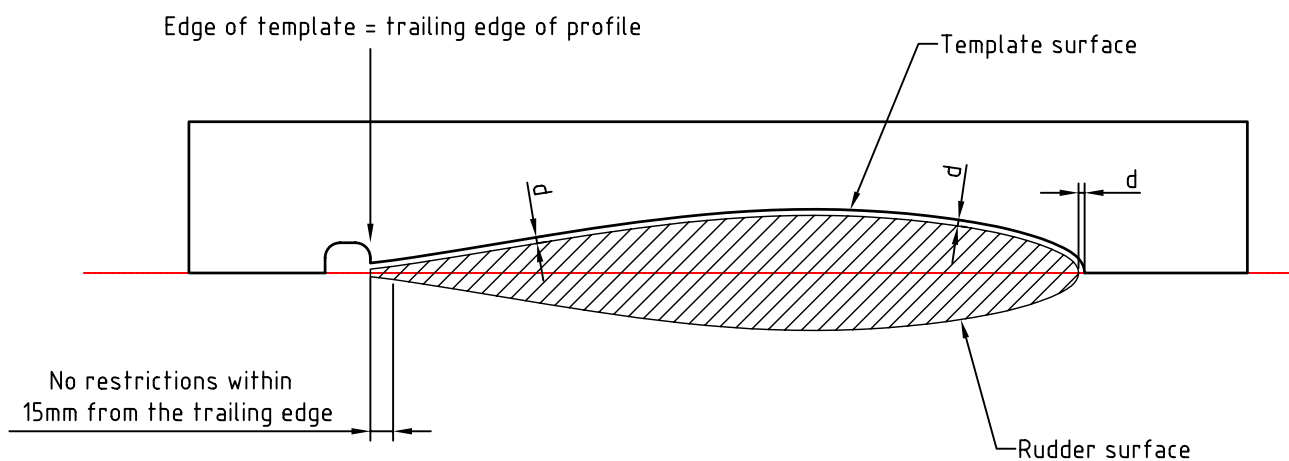


Distance d : $0\text{mm} \leq d \leq 4\text{mm}$



 X-Yachts WORLD CLASS SINCE 1979 <small>Fjordagervej 21 - Box 104 - DK-6100 Haderslev - Denmark Tel.Int +45 74 52 10 22 - Fax.Int.+45 74 53 03 97 e-mail: Info@x-yachts.com - WWW.x-yachts.com</small>	Yacht 	Description Position of max templates	
	Drawing Number H4 - 1/2	Scale 1:20	Date Issued 2006.01.06



Principle of maximum rudder templates for the X-35 Scale 1:5



Distance d : $0\text{mm} \leq d \leq 4\text{mm}$

 <p>X-Yachts WORLD CLASS SINCE 1979</p> <p>Fjordagervej 21 - Box 104 - DK-6100 Haderslev - Denmark Tel.Int +45 74 52 10 22 - Fax.Int.+45 74 53 03 97 e-mail: Info@x-yachts.com - WWW.x-yachts.com</p>	Yacht 	Description Position of max templates	
	Drawing Number H4 - 2/2	Scale 1:20	Date Issued 2006.01.06